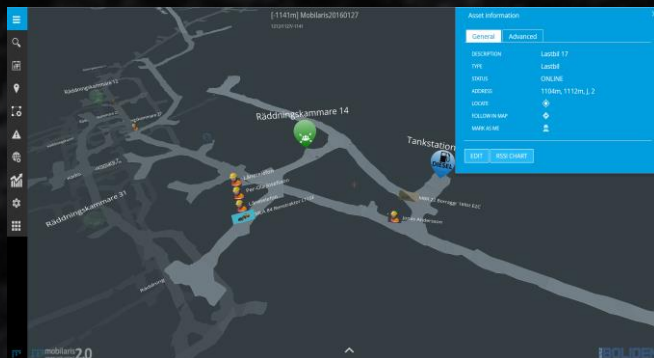


FEATURES

- WiFi tag IEEE 802.11 b/g/n (CCX compatible)
- Configurable blink rate (15 seconds interval gives approx. 3 years operation)
- Embedded accelerometer allows smart functions (detection of tag laying still etc.)
- Embedded magnetic detector that allows higher accuracy positioning using external exciters
- Two programmable push buttons that can be configured to trigger specific functionality
- Multi purpose LED showing operation but also other indications
- OTA Configuration



- 100% compatible with Mobilaris Mining Intelligence
- Administrative functions available in MMI



- Compatible with Craycom 125 kHz 3d Inductive Exciter

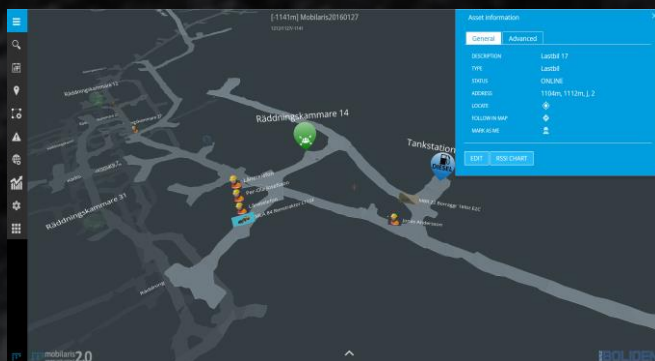
VARIANTS

- Cap lamp variant will be available in early 2017
 - Same technology and features but powered via the cap lamp battery and without buttons
- Smaller personal tag will be available on request
 - Same technology and features but smaller battery and form factor
- Dimensions (protective casing): 67 x 119 x 16 mm
- Three years uptime: (based on beacons every 15s and 8 hours/day)
- Operation temperature: 0 to +70 °C (option -30 to +85 °C)
- IP code: IP54
- Weight: 130 g
- Material: ABS with protection casing in silicone rubber
- Wi-Fi Certified
- Approvals: ETSI CE
- CPU: ARM Cortex M4 80 MHz
- Flash: 16 Mb
- Accelerometer: 3d for power save and other purposes

TECHNICAL SPECS

FEATURES

- Super ruggedized casing, mounted outside the vehicle
- WiFi tag IEEE 802.11 b/g/n (CCX compatible)
- Configurable blink rate
- Embedded accelerometer allows smart functions (detection of vehicle in operation or not)
- Detects input power levels which can be used to detect if the vehicle has its engine running
- Built in power source that secures blinks even if the power is cut (for some days)
- Embedded magnetic detector that allows higher accuracy positioning using external exciters
- Two external programmable push buttons that can be attached and configured to trigger specific functionality
- OTA Configuration



- 100% compatible with Mobilaris Mining Intelligence
- Administrative functions available in MMI



- Compatible with Craycom 125 kHz 3d Inductive Exciter

VARIANTS

- Outdoor variant available in early 2017
 - Including WiFi, GPRS connectivity
 - Including GPS receiver
- Dimensions (super ruggedized casing, Homogeneous molded in polyamide): 106 x 64 x 15 mm
- Operation temperature: -35 to +85 °C
- IP code: IP65
- Wi-Fi Certified
- Approvals: ETSI CE
- CPU: ARM Cortex M4 80 MHz
- Flash: 16 Mb
- Accelerometer: 3d for power save and other purposes
- Connector: M12 – 8p

TECHNICAL SPECS